

Steri-TOP lid



The Steri-TOP lid was designed with simple operation and guaranteed safety for use in a sterile environment in mind.

The instrument lids are made of highly polished AISI 304 grade stainless steel, in accordance with the same quality standards and requirements as our Sterisystem® Dry-Base® instrument trays.

The instrument tray is ergonomically opened by means of four silicone corners. In order to close the instrument tray, the four silicone corners are placed in the correct position and can easily be clicked onto the instrument tray.

The very small number of components, and the materials used, make the Steri-TOP lids the new standard for instrument tray lids, ensuring that no light instruments are blown out of the instrument tray during the sterilisation process.



» Steri-TOP lids sizes

All components are resistant to washing and autoclave sterilisation conditions (high temperatures, steam and vacuum) as well as to the most common chemicals used in hospitals.

The lids are available for DIN 1/4, 1/2, 3/4 and 1/1 and ISO 1/4, 1/2 and 1/1 baskets.



» Stackable

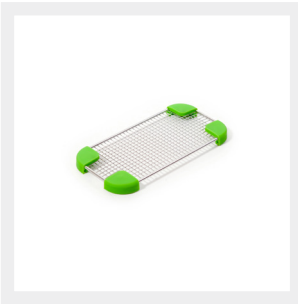
The ingenious design of the lids allows them to be stacked in storage when not in use. The silicone material of which the corners are made functions as an effective anti-slip layer.



» Matching instrument trays

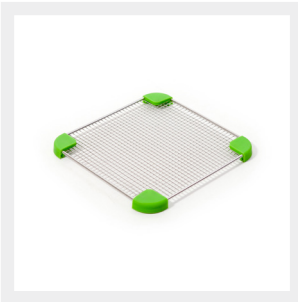
The Steri-TOP lids perfectly match the Sterisystem® Dry-Base® instrument trays.

» Steri-TOP lid - DIN



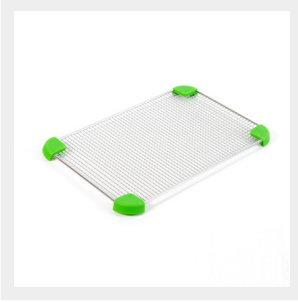
» Steri-TOP lid DIN 1/4

Article number	Colour corners	GTIN	Ext. dimensions
30014 00021	Green	05404019100129	4 ^{23/32} x 9 ^{29/64} x 0 ^{43/64} inch



» Steri-TOP lid DIN 1/2

Article number	Colour corners	GTIN	Ext. dimensions
30014 00014	Green	05404019100204	9 ^{29/64} x 9 ^{27/32} x 0 ^{43/64} inch



» Steri-TOP lid DIN 3/4

Article number	Colour corners	GTIN	Ext. dimensions
30014 00066	Green	05404019102987	14 ^{11/64} x 9 ^{27/32} x 0 ^{43/64} inch



» Steri-TOP lid DIN 1/1

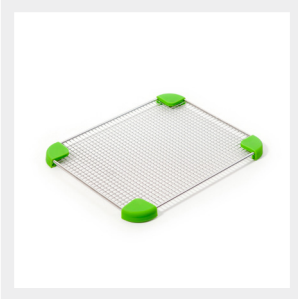
Article number	Colour corners	GTIN	Ext. dimensions
30014 00009	Green	05404019100280	18 ^{57/64} x 9 ^{27/32} x 0 ^{43/64} inch

» Steri-TOP lid - ISO



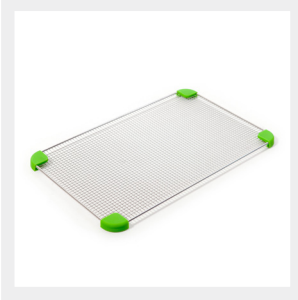
» Steri-TOP lid ISO 1/4

Article number	Colour corners	GTIN	Ext. dimensions
30014 00045	Green	05404019100365	4 ^{23/32} x 11 ^{13/16} x 0 ^{43/64} inch



» Steri-TOP lid ISO 1/2

Article number	Colour corners	GTIN	Ext. dimensions
30014 00038	Green	05404019100440	9 ^{29/64} x 11 ^{13/16} x 0 ^{43/64} inch



» Steri-TOP lid ISO 1/1

Article number	Colour corners	GTIN	Ext. dimensions
30014 00031	Green	05404019100525	18 ^{57/64} x 11 ^{13/16} x 0 ^{43/64} inch